



Four large stackable water base for maximum stability

Comes with one pole (six part bungee pole and two end rods) two hooks and two elastic loops

Zoom+ Arch



The arch shaped flag is perfectly suited to identify entrances at events, particular sporting meets for registration areas, or race start / finish lines. For stability we recommend using two optional extra stackable bases per side.

- Material :** GRP fibre glass pole - chrome steel end caps, plastic hook
- Graphic :** Single-sided
- Graphic attachment :** Pole pocket
- Wind resistance :** Up to 32 km/h

Zoom+ Arch	ZOOM+ARCH	⊗ 2500/3000 (h) x 4000 (w) mm *
Stackable Water Base	UF-ZMSWB	⊗ 162.5 (h) x 642 (w) mm

* The height and width may vary depending on the size and shape of the graphic



Handle for ease of transportation



Flag attached by elastic and plastic hook



Base weighted once filled with water

Street Flag



The ideal advertising medium when on the move!
 Perfectly suited to promote events, highlight your presence at trade shows or to organise a group of people on excursions!
 This rugged and lightweight backpack can be used with four different flag shapes using the supplied poles.

- Material :** Reinforced nylon backpack, fibre poles
- Graphic :** Single-sided
- Graphic attachment :** Pole pocket or eyelets (X-banner)
- Graphic shapes :** Feather - Quill - Edge - X-banner

Street Flag	UF-ZMSTF-01	Ⓞ 540 (H) x 310 (B) x 80 (T) mm
-------------	-------------	---------------------------------



Reinforced pole fixing system



Zipped storage for poles and rods



Mesh storage pocket on the sides



Zipped flag storage compartment

One bag but four different flag shapes!





Choosing the right outdoor display product is important to ensure maximum branding impact and to attract your desired visitors and customers.

It is also critically important to make the right choice that will suit your environment; display area size, possible weather conditions, visitor numbers, mobility and repeat usage.

A taller display may make all the difference to the impact and performance of your branding.

Some Tips To Take Care Of Your Products

Outdoor products are designed for moderate outdoor usage during the daytime. But even high quality materials deteriorate if not treated with care and used in extreme weathers.

1. Choose your location carefully to minimise the effects of the environment.

Air pollution can turn white to grey, UV rays can also alter the colour of your visuals and cause deterioration on materials used.

2. Optimise exposure time.

By storing your Outdoor products between each use, their lifespan will be extended.

3. Consider climatic conditions.

All Outdoor products are not weather resistant in the same way. Heavy rain combined with high winds may increase the risk of deterioration of certain products. Follow the instructions given in the technical specification data sheets of each product provided.

Designed For All Occasions

- Outdoor Exhibitions
- Music Festivals
- Markets
- Sport Events
- Outside Sales Outlets
- Fairs
- and many others!

Our Outdoor Range



Roller and Tension Banners



Inflatable Displays



Pavement Signage



Café barriers



Parasols



Signage



Tents



Blizzard



Easy to assemble on location, secured with large capacity base, graphic width and height is size adjustable to suit most applications.

Material :	Plastic and metal
Pole :	Adjustable in width and height
Graphic area :	Single-sided
Graphic attachment :	Eyelets
Base capacity :	12 litres
Wind resistance :	Up to 18mph / 28 km/h
Bag :	Non-padded (included) / padded (optional)

Blizzard	UB701	📏 1600/2100 (h) x 600/800 (w) x 540 (d) mm
----------	-------	--

Accessories :

Blizzard padded bag	AB140-C
---------------------	---------

Horizon



Maximum exposure display unit, perfect for outdoor large scale promotions. Securely weighted by twin water filled bases for total stability.

Material :	Aluminium, moulded grey plastic base
Pole :	Adjustable height (1500-2400 mm)
Graphic area :	Single or double-sided
Graphic attachment :	Eyelets
Base capacity :	28 litres per tank
Wind resistance :	8-12 mph / 12-19 km/h
Bag :	Non-padded (Optional)

Horizon	UB203	📏 1500/3000 (h) x 2500 (w) x 800 (d) mm
---------	-------	---

Accessories :

Horizon pole bag	AB195A	📏 1730 (h) x 230 (w) x 190 (d) mm
Horizon base bag	AB195B	📏 900 (h) x 490 (w) x 370 (d) mm



Large removable twin feet

Thunder 2



The only outdoor roller banner with double sided graphics for maximum brand exposure and impact.

Material :	Plastic, aluminium and steel
Pole :	Three part bungee pole
Graphic area :	Double-sided
Graphic attachment :	Self-adhesive leader / top snap rail
Ground fixing :	4 pegs (included)
Wind resistance :	up to 7 mph / 11 km/h (unpegged) up to 24 mph / 39 km/h (if pegged)
Bag:	Padded

Thunder 2	UB185-850-01	📏 2200 (h) x 850 (w) x 385 (d) mm
-----------	--------------	-----------------------------------



Three part bungee pole



Twist and lock feet



Metal pegs

Easy to fold away for storage

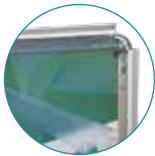
A-sign Board



Robust and sturdy Graphic area 'A' Poster frame with easy graphic front loading. Suitable for outdoor or indoor use.

Material: Aluminium, Galvanised steel, PVC sheet cover
Graphic area : Double-sided
Graphic attachment : Snap rail
Wind resistance: 13-18 mph / 20-28 km/h

A-sign Board A2	VF204-A2	925 (h) x 465 (w) x 675 (d) mm
A-sign Board A1	VF204-C	1060 (h) x 638 (w) x 825 (d) mm
A-sign Board A0	VF204-C-A0	1440 (h) x 883 (w) x 835 (d) mm
A-sign Board B1	VF203	1220 (h) x 848 (w) x 925 (d) mm
A-sign Board B0	VF203A	1620 (h) x 1128 (w) x 1025 (d) mm



Complete with clear protective graphic cover



Whirlwind



A heavy-duty pavement swing sign with poster quick front loading. Easy to move thanks to its wheeled base and handle.

Material: Aluminium, steel, plastic base, PVC sheet cover
Graphic area : Double-sided
Base capacity : 25 l (A1) / 55 l (A0) / 49 l (B1)
Graphic attachment : Snap rail
Wind resistance : 13-18 mph / 20-28 km/h

Whirlwind A1	UB207	1165 (h) x 780 (w) x 500 (d) mm
Whirlwind A0	UB207-A0	1554 (h) x 1010 (w) x 625 (d) mm
Whirlwind B1	UB207-B1	1350 (h) x 1000 (w) x 620 (d) mm



Wheeled compact moulded hollow base



Snap frame

Poster protected by PVC sheet



Spring pivot for swing motion

25l 55l 49l

Available from
Summer 2019



Swing



Available from Summer 2019

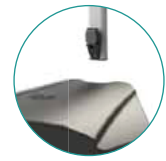
Simple, strong, economical and popular external swing sign with easy to change panel to keep your message fresh. No tools required.

Material :	Rubber base, powder coated frame, aluminium panel
Graphic area :	Double-sided
Graphic attachment :	Eyelets and bolts
Base :	9kg
Wind resistance:	13-18 mph / 20-28 km/h

Swing	UB113	950 (h) x 600 (w) x 485 (d) mm
-------	-------	--------------------------------

Accessories :

Swing replacement panel	UB113-P	755 (h) x 500 (w) mm
-------------------------	---------	----------------------



Simply push the frame to locate into the base



Easy changing mechanism to re-brand your swing sign

Strong heavy duty rubber base



Shield



Functional rigid sign board with flexible aluminium panel securely bolted to the base. Safe graphic with rounded corners.

Material :	Recycled rubber base, aluminium panel (1.2 mm)
Graphic area :	Double-sided
Base :	8 kg
Graphic attachment :	Bolts
Wind resistance:	13-18 mph / 20-28 km/h

Shield	UB108	800 (h) x 465 (w) x 450 (d) mm
--------	-------	--------------------------------

Accessories :

Shield replacement panel	UB108P	800 (h) x 410 (w) x 1.2 (d) mm
--------------------------	--------	--------------------------------

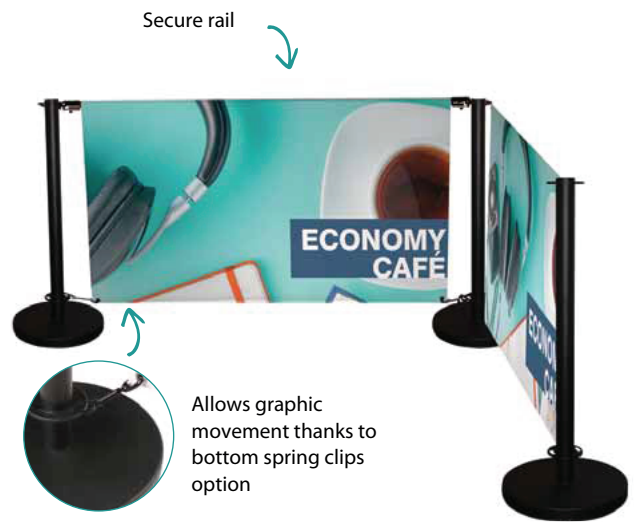


Print your message directly onto aluminium or mount self-adhesive vinyl





Choose between bottom spring clips or rail fixing options



Secure rail

Allows graphic movement thanks to bottom spring clips option

Deluxe Café

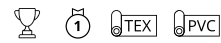


A modular portable café barrier system, chromed effect finish, to get a premium look and feel.

- Material :** Stainless steel
- Graphic area :** Single / Double-sided
- Weight :** 7.75 kg (Post and Base)
- Graphic attachment :** Looped top rail
Looped bottom rail or spring clips

Graphic Rail 1000 mm	UB215-1000	⊘ 1140 (w) mm
Graphic Rail 1500 mm	UB215-1500	⊘ 1940 (w) mm
Graphic Rail 2000 mm	UB215-2000	⊘ 2440 (w) mm
Base	UB215B	⊘ 360 (Ø) mm
Post	UB215P	⊘ 960 (h) mm
Spring clips (pair)	UB215-SC	

Economy Café



A cost effective way of defining areas outside restaurants, bars and shopping centres. Heavyweight post and base. Black finish.

- Material :** Stainless steel
- Graphic area :** Single / Double-sided
- Weight :** 7.75 kg (Post and Base)
- Graphic attachment :** Looped top rail
Looped bottom rail or spring clips

Graphic Rail 1000 mm	UB214-1000	⊘ 1140 (w) mm
Graphic Rail 1500 mm	UB214-1500	⊘ 1940 (w) mm
Graphic Rail 2000 mm	UB214-2000	⊘ 2440 (w) mm
Base	UB214B	⊘ 360 (Ø) mm
Post	UB214P	⊘ 960 (h) mm
Spring clips (pair)	UB214-SC	

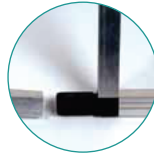


An easy and simple way to define areas while advertising at the same time

Monsoon

The Monsoon is a large format Graphic outdoor 'A' frame banner, made from lightweight aluminium, ideal for use with PVC eyelet banners.

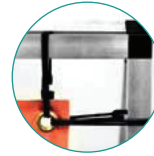
This trusted best selling banner is also available in wall mounted format, suitable for indoor or outdoor use. Easy to fit graphic can be changed regularly to suit your needs.



Push-fit joins



Wall mounted bracket



Graphic attached with eyelets



Metal hinges

Wall Monsoon



Wall mounted sign solution for pop-up shops and temporary signage. Graphic is secured with adjustable looped bungee cords.

Material : Aluminium tubes (25 mm), plastic connectors

Graphic area : Single-sided

Graphic attachment : Eyelets and looped bungee cords

Wall Monsoon 1250 mm	UB712-C	Ⓞ 1250 (h) x 1250 (w) x 130 (d) mm
Wall Monsoon 2000 mm	UB713-C	Ⓞ 1000 (h) x 2000 (w) x 130 (d) mm
Wall Monsoon 3000 mm	UB714-C	Ⓞ 1250 (h) x 3000 (w) x 130 (d) mm

Tool-free frame assembly



Custom made sizes available up to 5m in length

Monsoon



Easy to assemble on location thanks to its push-fit tubes system, this 'A' frame banner is ground pegged for extra-stability.

Material : Aluminium tubes (25 mm), plastic connectors

Graphic area : Single or double-sided

Graphic attachment : Eyelets and looped bungee cords

Wind resistance : 18-24 mph / 29-38 km/h

Monsoon 2500 mm	UB707-C	Ⓞ 1000 (h) x 2500 (w) x 640 (d) mm
Monsoon 3000 mm	UB711-C	Ⓞ 1250 (h) x 3000 (w) x 795 (d) mm



Supplied with ground pegs

Stowaway



Extremely portable and lightweight, this flexible banner pops out in seconds to form its oval shape. Tool-free assembly.

- Material :** Sprung steel pole
- Graphic area :** Double-sided
- Graphic attachment :** Elasticated pole pocket
- Ground fixing :** Four pegs (included)

Stowaway 1400 mm	UB736-03A	Ⓞ 700 (h) x 1420 (w) x 400/480 (d) mm
Stowaway 1700 mm	UB736-02A	Ⓞ 850 (h) x 1720 (w) x 400/480 (d) mm
Stowaway 2000 mm	UB736-01A	Ⓞ 1000 (h) x 2020 (w) x 400/480 (d) mm



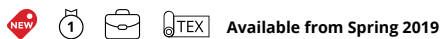
Pack away into a small carry bag



Hook and loop stability straps

Instantaneous opening

Rainbow



Available from Spring 2019



Ultra compact promotional external display, lightweight and robust when pegged into soft ground. Flexible rods allow movement in the wind delivering maximum performance.

- Material :** Fibreglass pole, plastic end moulding
- Graphic area :** Double-sided
- Graphic attachment :** Elasticated pole pocket
- Ground fixing :** Four pegs (included)

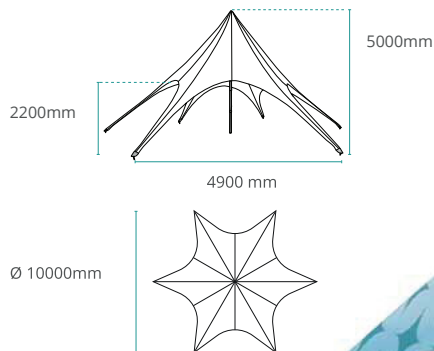
Rainbow Large	RNB-03	Ⓞ 1219 (h) x 2438 (w) x 609 (d)
---------------	--------	---------------------------------



Complete with carry bag

Side arms attach together using hook and loop





NEW

Eye-catching original shape

Canopy securely fastened with tent leg connectors and ultra heavy duty ground stakes

Available in two colours or custom full printed canopy



Star Tent



6 sided star tent supported with a telescopic pole providing a huge area for branding and plenty of shelter for your guests. Custom full printed canopy optional extra.

Material :	Aluminium
Graphic area :	Single-sided
Graphic attachment :	Pegged
Wind resistance :	up to 28 mph / 38km/h
Bag :	2 (included)

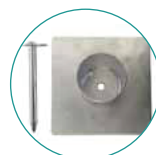
Frame and fixings come in bags



Supplied with six ground stakes



Crank handle



Base pole support



Wire rope setting-out guide

Zoom Tent



Lightweight aluminium tent frame with umbrella system. Folds and unfolds in minutes without tools. Dress it up with optional standard colour or custom full printed canopy, full and half walls.

- Material :** Aluminium frame, plastic joins
- Graphic area :** Double-sided (wall, half wall) / single-sided (canopy)
- Graphic colours :** White - Black - Blue - Red (standard) / Full Graphic (optional)
- Graphic attachment :** Hook and loop / Pocket (half wall)
- Wind resistance :** 13-18 mph / 20-28 km/h
- Ground fixing :** Pegs and ropes (included)
- Bag :** Wheeled Standard

Zoom Tent Frame 2x2	ZT22-XAF	Ⓞ 3160 (h) x 2000 (w) x 2000 (d) mm
Zoom Tent Frame 3x3	ZT33-XAF	Ⓞ 3160 (h) x 2920 (w) x 2920 (d) mm
Zoom Tent Frame 3x4.5	ZT345-XAF	Ⓞ 3160 (h) x 4300 (w) x 2920 (d) mm
Zoom Tent Frame 3x6	ZT36-XAF	Ⓞ 3160 (h) x 5800 (w) x 2920 (d) mm
Canopy	ZTXX-CTB/K/R/W	Colours : White / Black / Blue / Red
Full Wall	ZTXX-FWB/K/R/W	Colours : White / Black / Blue / Red
Half Wall	ZTXX-HWB/K/R/W	Colours : White / Black / Blue / Red

Accessories :

8kg weight	ZT-BASE
2-3m half wall mounting bar	ZT33-MTB
Zoom Tent connector	ZT-TJC
Zoom flag clamp	ZT-FCA



Optional weighting

Ideal for markets, sporting events and receptions

Available in four colours or custom full printed canopy



Add extra visibility by attaching a flag

Easy to collapse and pack away



Crank to tension canopy

Automatic locking

shades and protects up to five people



Zoom Tent Eco



Cost effective steel tent frame. White powder coated finish. Folds completely into portable wheeled carry bag. Full printed canopy optional extra.

- Material :** Steel frame, plastic joins
- Graphic area :** Single-sided
- Graphic colours :** White (standard) / Full graphic (optional)
- Graphic attachment :** Hook and loop
- Wind resistance :** 13-18 mph / 20-28 km/h
- Ground fixing :** Pegs and ropes (included)
- Bag :** Wheeled standard

Zoom Tent Eco 3x3	FD33-SQF	Ⓞ 3315/3415/3510 (h) x 3310 (w) x 3310 (d) mm
Canopy	FD33-CTW	Colour: White



Collapsible frame



Winder opening and closing

Locking post

Bora Tent



Inflatable tent offers a fantastic 'canvas' for visual advertisements whilst providing shelter from the elements.
Trapped air technology: silent and free-standing once inflated.

- Material :** TPU, Polyester inner coat
- Graphic area :** Single-sided
- Graphic colours :** Blue - Dark grey - light grey (standard)
Full graphic (optional)
- Graphic attachment :** Zip system (standard) / hook and loop (full graphic)
- Ground fixing :** Pegs (optional)
- Wind resistance :** 19-24 mph / 29-38 km/h
- Bag :** Standard

Tent frame	UI00801	⊗, 2460 (h) x 3000 (w) x 3000 (d) mm
Canopy	UI00815-B/DG/LG	Colours : Blue / Dark Grey / Light Grey
Side Wall	UI00816-B/DG/LG	Colours : Blue / Dark Grey / Light Grey

Accessories :

Hand pump	CDX-INFTA-PM
Electric pump 400w	INFTA-PE4EU



Available in three colours or custom full printed options ● ● ●

Complete with carry bag



Inflatable structure



Bora Column



Get noticed in a crowd with the impressively tall 2.4m graphic of this inflatable column.
Trapped air technology: silent and free-standing once inflated.

- Material :** PVC column, plastic base
- Graphic area :** 360°
- Graphic attachment :** Hook and loop
- Ground fixing :** Four pegs (included)
- Wind resistance :** 15-24 mph / 24-38 km/h (if pegged)
- Bag :** Optional extra

Bora Column Kit	INFLCOL-220	⊗, 2390 (h) x 460 (Ø) mm
-----------------	-------------	--------------------------

Accessories :

Hand pump	CDX-INFTA-PM
Electric pump 400w	INFTA-PE4EU



New Version



Optional pumps



Plastic water base



Sunrise Square Parasol



Parasol combines marketing with functionality. Telescopic pole for ease of transportation and adjustable height. Automatic locking system once opened.

- Material :** Powder coated steel
- Graphic area :** Single-sided
- Opening :** Clamp
- Wind resistance :** 13-18 mph / 20-28 km/h (with optional cement base)

Sunrise Square Parasol with 20kg cement base	UU-SB	📏 2040-2740 (h) x 2000 (w) x 2000 (d) mm
--	-------	--



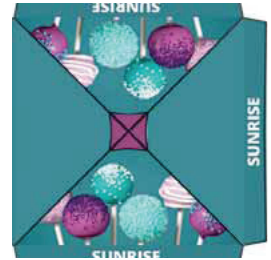
Clamp opening and closing



Automatic locking



Ø 34/35 mm



Pole carry bag

Perfect for summer advertising

Sunrise Circular Parasol



A great addition to any external event creating maximum impact delivering your brand message whilst sheltering you from the elements.

- Material :** Powder coated steel
- Graphic area :** Single-sided
- Opening :** Handle
- Wind resistance :** 13-18 mph / 20-28 km/h (with optional cement base)

Sunrise Circular Parasol with 20kg cement base	UU-CB	📏 2500 (h) x 2660 (Ø) mm
--	-------	--------------------------



Winding handle



Safety chain and pin



Ø 38 mm